

LK18 系列 (经济型) I. 单节夹紧螺丝固定式 (膜片联轴器)

LK18Series (Economic Type) I. Clamp Type (Single Plate Springs)

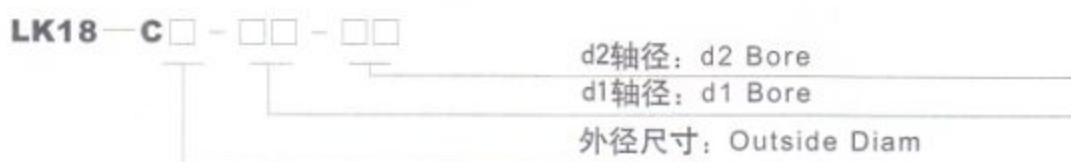
特点 Features

- 高扭矩刚性和高灵敏度
- 零回转间隙
- 顺时针与逆时针回转特性完全相同
- 不锈钢膜片补偿角向和轴向偏差
- 常用于伺服电机、步进电机联接
- 夹紧螺丝固定
- High torque capacity and excellent response
- Zero backlash
- Identical clockwise and anticlockwise rotational characteristics
- Stainless steel plate springs absorb angular misalignment and shaft end-play
- For servomotor, stepmotor connect
- Clamp type



主体：铝合金材料
Body: Aluminum Alloy

选型举例：Ordering Information

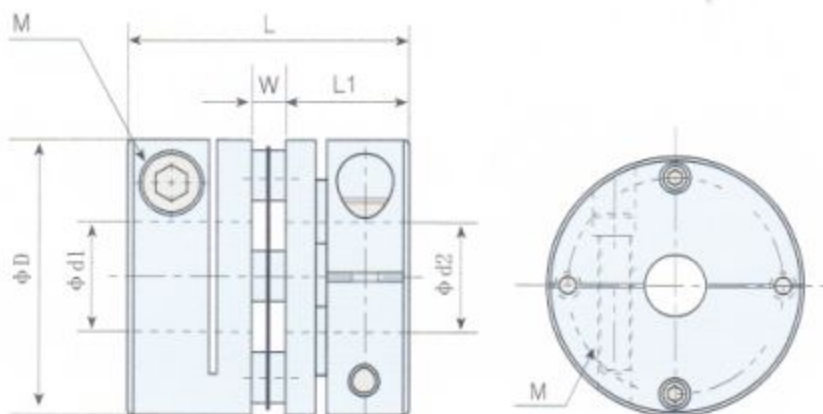


例：LK18-C34-1014

LK18: 系列号, 材料为铝合金
C34: 外径尺寸: 34mm, 夹紧螺丝固定
10: d1轴径为: 10mm
14: d2轴径为: 14mm

Example: LK18-C34-1014

LK18: Series NO, Material :Aluminum Alloy
C34: Outside Diam: 34mm, Clamp Type
10:d1 Bore :10mm
14:d2 Bore :14mm



说明: 如需另加键槽, 则以非标形式定做, 在型号外径尺寸后加K, 例: LK18-C34K-1014表示。

外型尺寸 Dimensions

单位 (unit): mm

型号 Model	∅d1 ∅d2 轴径 Bore	∅D	L	W	L1	M	拧紧力矩 Wrench Torque (N.m)
LK18-C26-□□□□	5 6 8 9.525 10	26	25.5	2.5	11.5	M3	1.5
LK18-C34-□□□□	8 9.525 10 11 12 14	34	31.3	3.1	14.1	M4	1.5
LK18-C39-□□□□	10 11 12 14 15 16	39	34.1	4.1	15.0	M4	2.5

外型尺寸 Dimensions

单位 (unit): mm

型号 Model	轴径 Bore Ød1 Ød2	ØD	L	W	L1	M	拧紧力矩 Wrench Torque (N·m)
LK18-C44-□□□□	11 12 14 15 16 19	44	34.5	4.5	15.0	M4	2.5
LK18-C56-□□□□	14 15 16 19 20 22 24	56	45.0	5.0	20.0	M5	7.0
LK18-C68-□□□□	19 20 22 24 30 35	68	54.0	6.0	24.0	M6	12
LK18-C82-□□□□	24 28 30 35 38 40	82	68.0	8.0	30.0	M8	16
LK18-C94-□□□□	25 28 30 35 38 40	94	68	8.0	30.0	M8	28
LK18-C104-□□□□	30 35 38 40 42 45	104	70	10.0	30.0	M8	28

技术参数 Specifications

型号 Model	额定扭矩 Rated Torque (N·m)	最大扭矩 Max. Torque (N·m)	最高转速 Max. Rotational Frequency (rpm)	惯性力矩 Moment of Inertia (kg·m ²)	静态扭矩刚性 Static Torsional Stiffness (N·m/rad)	角向偏差 Errors of Angularity (°)	轴向偏差 Errors of Shaft End-play (mm)	重量 Mass (g)
LK18-C26-□□□□	1.4	2.8	10000	1.8×10^{-6}	690	1	± 0.2	24
LK18-C34-□□□□	2.8	5.6	10000	7.2×10^{-6}	1650	1	± 0.2	46
LK18-C39-□□□□	5.8	11.6	10000	1.8×10^{-5}	2500	1	± 0.2	78
LK18-C44-□□□□	8.7	17.4	10000	2.5×10^{-5}	2900	1	± 0.2	96
LK18-C56-□□□□	25	50	10000	1.0×10^{-4}	8400	1	± 0.2	206
LK18-C68-□□□□	55	110	10000	1.9×10^{-4}	11500	1	± 0.2	366
LK18-C82-□□□□	80	160	10000	7.0×10^{-4}	14550	1	± 0.2	710
LK18-C94-□□□□	185	370	10000	1.23×10^{-3}	16900	1	± 0.2	960
LK18-C104-□□□□	255	510	10000	1.86×10^{-3}	25100	1	± 0.2	1190

说明: 惯性力矩和重量按最大孔径计算。

Moment of inertia and mass figures based on the maximum shaft bores

LK18 系列 II. 多节夹紧螺丝固定式(膜片联轴器)

LK18 Series (Economic Type) II. Clamp Type (Double Plate Springs)

特点 Features

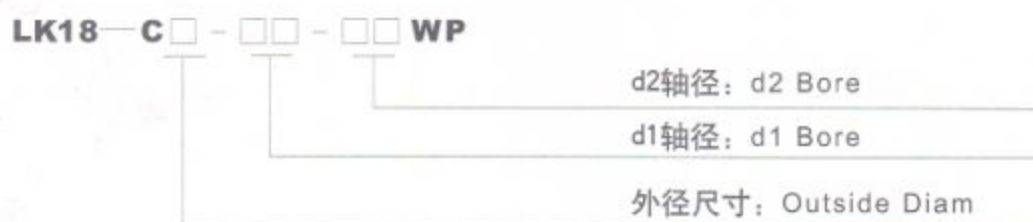
- 高扭矩刚性和高灵敏度
- 零回转间隙
- 顺时针与逆时针回转特性完全相同
- 不锈钢膜片补偿径向、角向和轴向偏差
- 常用于伺服电机、步进电机联接
- 夹紧螺丝固定
- High torque capacity and excellent response
- Zero backlash
- Identical clockwise and anticlockwise rotational characteristics
- Stainless steel plate springs absorb parallel, angular misalignments and shaft end-play
- For servomotor, stepmotor connect
- Clamp type



主体: 铝合金材料

Body: Aluminum Alloy

选型举例：Ordering Information

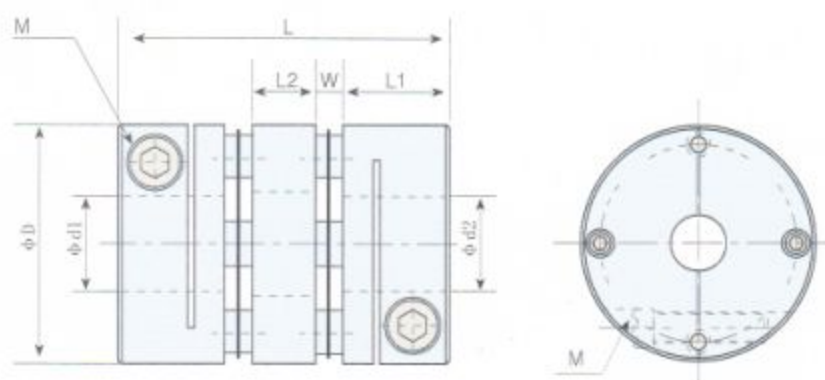


例：LK18-C56-2024WP

LK18: 系列号, 材料为铝合金
C56: 外径尺寸: 56mm, 夹紧螺丝固定
20: d1轴径为: 20mm
24: d2轴径为: 24mm

Example: LK18-C56-2024WP

LK18: Series NO, Material : Aluminum Alloy
C56: Outside Diam: 56mm, Clamp Type
20: d1 Bore : 20mm
24: d2 Bore : 24mm



说明: 如需另加键槽, 则以非标形式定做, 在型号外径尺寸后加K, 例: LK18-C56K-2024WP表示。

外型尺寸 Dimensions

单位 (unit): mm

型号 Model	∅d1 ∅d2 轴径 Bore	∅D	L	W	L1	L2	M	拧紧力矩 Wrench Torque (N·m)
LK18-C26-□□□□WP	5 6 8 9.525 10	26	35	2.5	11.5	7.0	M3	1.5
LK18-C34-□□□□WP	8 9.525 10 11 12 14	34	45	3.1	14.1	10.6	M4	1.5
LK18-C39-□□□□WP	10 11 12 14 15 16	39	49	4.1	15.0	10.8	M4	2.5
LK18-C44-□□□□WP	11 12 14 15 16 19	44	50	4.5	15.0	11.0	M4	2.5
LK18-C56-□□□□WP	14 15 16 19 20 22 24	56	63	5.0	20.0	13.0	M5	7.0
LK18-C68-□□□□WP	19 20 22 24 30 35	68	74	6.0	24.0	14.0	M6	12
LK18-C82-□□□□WP	24 28 30 35 38 40	82	98	8.0	30.0	22.0	M8	16
LK18-C94-□□□□WP	25 28 30 35 38 40	94	98	8.0	30.0	22.0	M8	28
LK18-C104-□□□□WP	30 35 38 40 42 45	104	102	10.0	30.0	22.0	M8	28

技术参数 Specifications

型号 Model	额定扭矩 Rated Torque (N.m)	最大扭矩 Max. Torque (N.m)	最高转速 Max. Rotational Frequency (rpm)	惯性力矩 Moment of Inertia (kg · m ²)	静态扭矩刚性 Static Torsional Stiffness (N.m / rad)	径向偏差 Errors of Eccentricity (mm)	角向偏差 Errors of Angularity (°)	轴向偏差 Errors of Shaft End-play (mm)	重量 Mass (g)
LK18-C26-□□□□WP	1.4	2.8	10000	3.3×10^{-6}	950	0.04	1.5	± 0.4	34
LK18-C34-□□□□WP	2.8	5.6	10000	8.9×10^{-6}	1960	0.04	1.5	± 0.4	70
LK18-C39-□□□□WP	5.8	11.6	10000	2.4×10^{-5}	4500	0.04	1.5	± 0.4	118
LK18-C44-□□□□WP	8.7	17.4	10000	3.2×10^{-5}	5100	0.04	1.5	± 0.4	142
LK18-C56-□□□□WP	25	50	10000	1.1×10^{-4}	10500	0.04	1.5	± 0.4	296
LK18-C68-□□□□WP	55	110	10000	2.8×10^{-4}	18500	0.04	1.5	± 0.4	544
LK18-C82-□□□□WP	80	160	10000	1.0×10^{-3}	21800	0.04	1.5	± 0.4	1020
LK18-C94-□□□□WP	185	370	10000	1.76×10^{-3}	84500	0.04	1.5	± 0.4	1210
LK18-C104-□□□□WP	255	510	10000	1.86×10^{-3}	125500	0.04	1.5	± 0.4	1460

说明：惯性力矩和重量按最大孔径计算。

Moment of inertia and mass figures based on the maximum shaft bores